

## ST-O003 SIP -Mini Outdoor Station 4 Buttons

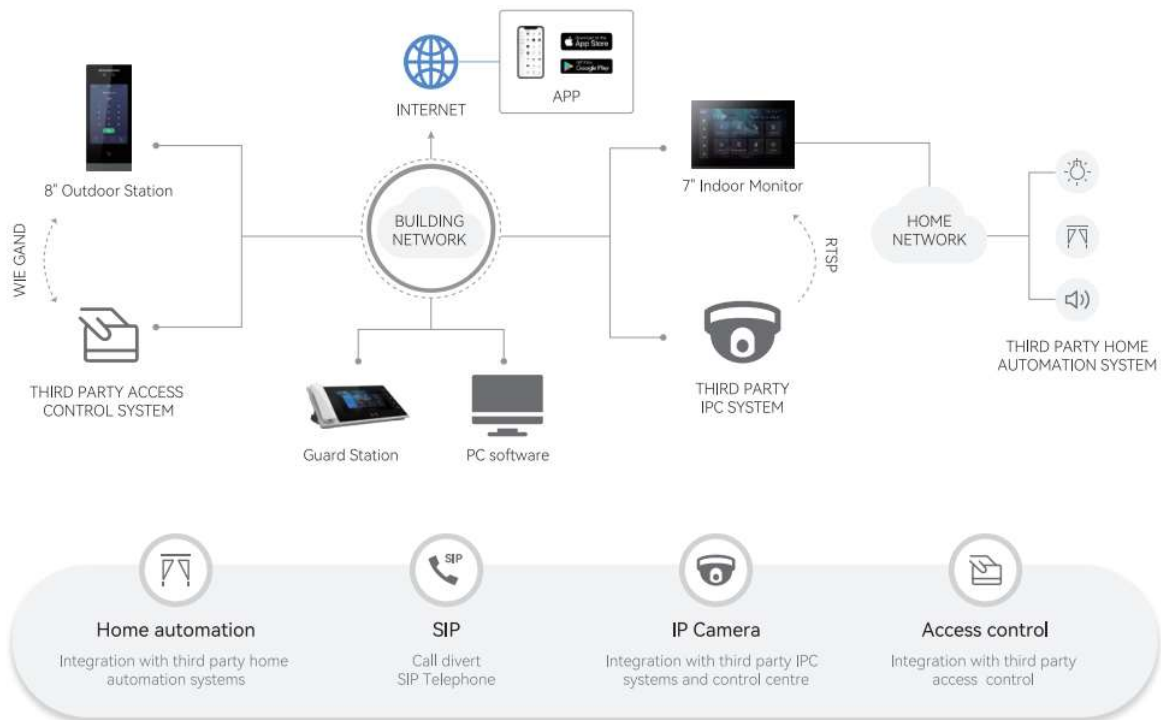
### Key Characteristics

#### Basic Function

- Support SIP protocol
- Support IC card unlocks
- Adjustable unlock time
- Door status detection and timeout alarm
- Support online update
- 2 lock management



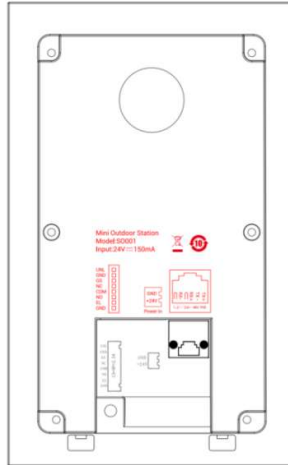
### Typical Topology



## Specifications

Model		ST-O003	
System Parameters	Processor	High-Performance Embedded SOC Processor	
	Operation system	Embedded Linux Operation System	
Video Parameters	Camera	CMOS 2 MP HD Colorful Camera	
	Video compression standard	H.264	
	Resolution	1024*720	
	Video frame rate	15 fps	
Audio Parameters	Audio input	Built-in Omnidirectional Microphone	
	Audio output	Built-in Loudspeaker	
	Audio compression standard	G.711 A	
	Audio sample Rate	16K16 Bit	
	Audio quality	Noise Suppression and Echo Cancellation	
Access Control Parameters	Internal card reader	Built-in IC Card Reader	
	Exit button	Exit Button for Opening the Door	
	Door magnetic detection	Detects Door Magnetic Status	
Light Supplement	Light supplement mode	LED Supplement	Visible Light Supplement
Network Parameters	Ethernet	10/100 Mbps Self-Adaptive Ethernet	
	Network protocol	TCP/IP, UDP, SIP, HTTP, HTTPS, FTP, RTSP, RTP	
Alarm Parameters	Alarm input	Door Magnetic Alarm, Tampering Alarm	
Device Interfaces	Network interface	1 RJ-45 10/100 Mbps Self-Adaptive Ethernet Interface	
	I/O output	Door lock, Door status detection	
	Material	Aluminum faceplate	
	Power supply	DC 24V	
	Power consumption	≤12 W	
	Working temperature	-20° C to +55° C (-4° F to 131° F)	
	Working humidity	10% to 90%	
	IP protection level	IP54	
	Dimensions (L × W × H)	120mm × 194 mm × 44.7mm	
	Certification	CE, ROHS	

## Appearance and Interfaces



### Interface Description:

- RJ45 Network Interface: cable interface, connecting standard 48V POE switch
- GND +24V: independent DC 24V power supply interface
- UNL GND: Door inside unlock interface
- GS GND: door status detection interface
- NO COM NC: normal open/close interface
- EL GND: 12V electric lock